

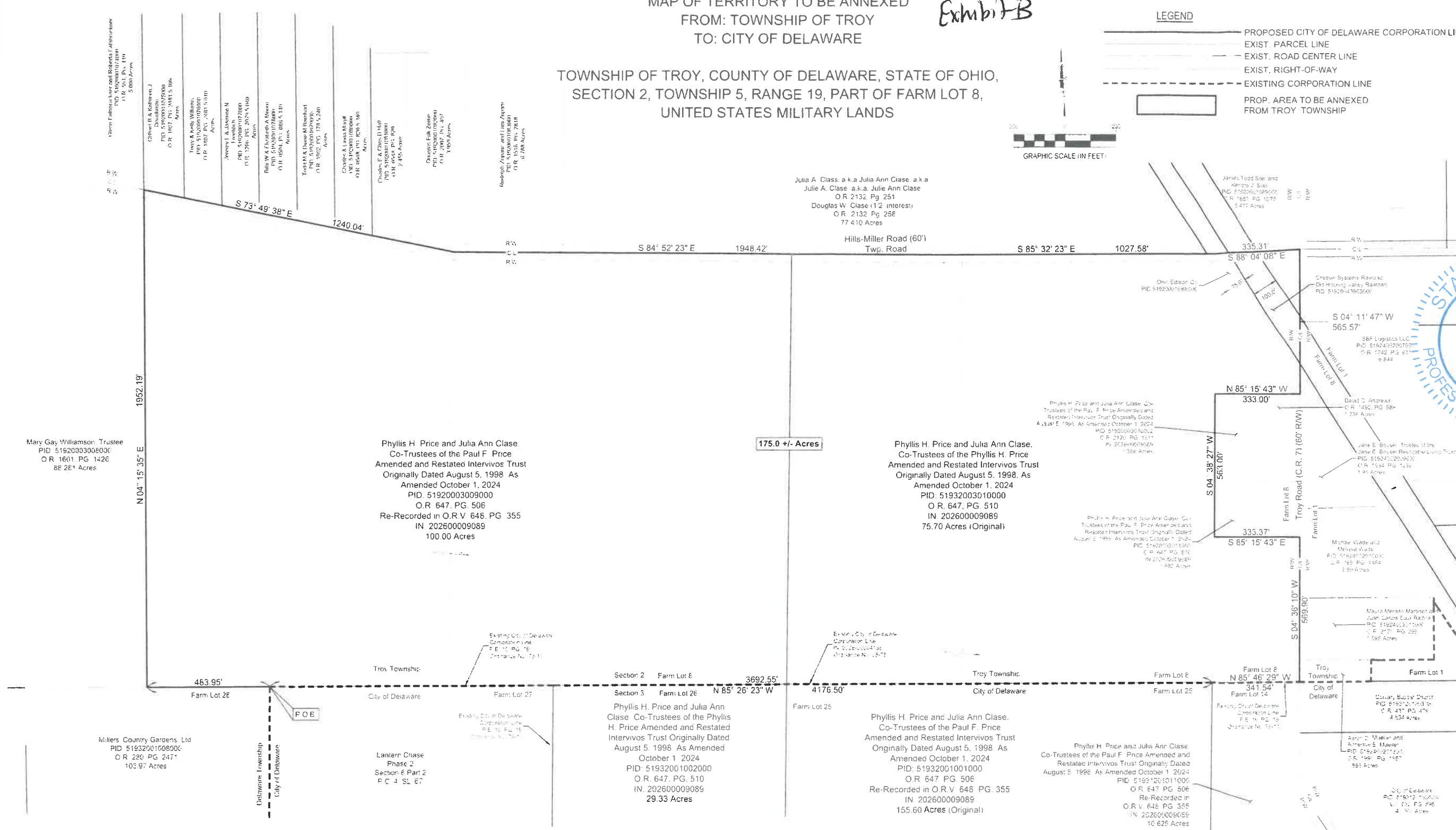
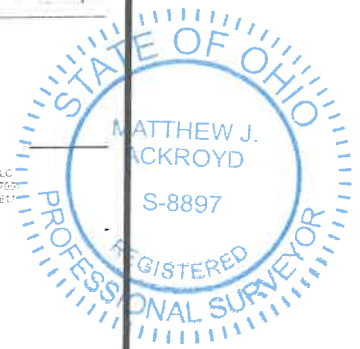
MAP OF TERRITORY TO BE ANNEXED  
FROM: TOWNSHIP OF TROY  
TO: CITY OF DELAWARE

Exhibit B

TOWNSHIP OF TROY, COUNTY OF DELAWARE, STATE OF OHIO,  
SECTION 2, TOWNSHIP 5, RANGE 19, PART OF FARM LOT 8,  
UNITED STATES MILITARY LANDS

LEGEND

- PROPOSED CITY OF DELAWARE CORPORATION LINE
- EXIST. PARCEL LINE
- EXIST. ROAD CENTER LINE
- EXIST. RIGHT-OF-WAY
- - - EXISTING CORPORATION LINE
- ▭ PROP. AREA TO BE ANNEXED FROM TROY TOWNSHIP



175.0 +/- Acres

Annexation  
175.0 +/-

NOTE:  
THIS PETITION IS FILED AS AN EXPEDITED II ANNEXATION  
PROCEEDING UNDER SECTION 709.021 & 709.023 O.R.C

CONTIGUITY NOTE  
TOTAL PERIMETER OF ANNEXATION AREA IS 13,383.42± FT.  
OF WHICH 4,034.05± FT IS CONTIGUOUS WITH THE CITY  
OF DELAWARE BY ORDINANCE NUMBERS 73-11 AND 25-75.  
GIVING 30.14% CONTIGUITY WITH THE EXISTING CITY OF  
DELAWARE CORPORATION LINE

LENGTH OF ROADWAY AFFECTED BY ANNEXATION  
- 4,551.65 LINEAL FEET OF TOWNSHIP ROADS  
- 1,135.47 LINEAL FEET OF COUNTY ROADS  
- 0 LINEAL FEET OF U.S. OR STATE ROUTE

THIS ANNEXATION DOES NOT CREATE ANY  
UNINCORPORATED ISLANDS

Acreage Breakdown:

Troy Township: (175.0 +/- Acres)

Phyllis H. Price and Julia Ann Clase Trustee Parcels 173.0 +/- Acres  
Railroad Parcels 2.0 +/- Acres

DELAWARE COUNTY ENGINEER:  
MAP DEPARTMENT

I HERBY CERTIFY THE WITHIN TO BE A TRUE COPY OF  
THE ORIGINAL ON FILE IN THE MAP DEPARTMENT

CHRIS E BAUSERMAN P.E. P.S.  
COUNTY ENGINEER

*William E. Spera* 4/27/2026  
SUPERVISOR DATE

THIS EXHIBIT WAS PREPARED FROM RECORD INFORMATION FROM  
THE DELAWARE COUNTY ENGINEER, RECORDER, AND AUDITOR'S  
OFFICE, AND IS NOT INTENDED FOR THE TRANSFER OF REAL  
PROPERTY.

*Matthew J. Ackroyd* 4/27/26  
MATTHEW J ACKROYD OHIO PS NO 8897 DATE  
matt.ackroyd@cesoinc.com

IC	Description	Date

2025 CESO INC  
Project Number: 765274  
Scale: 1"=200'  
Drawn By: PJM  
Checked By: ALB  
Date: 04/24/2026  
Issue: N/A

Drawing Title