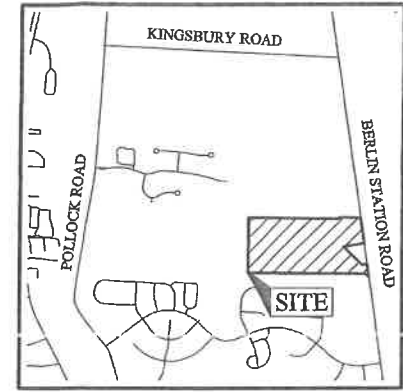
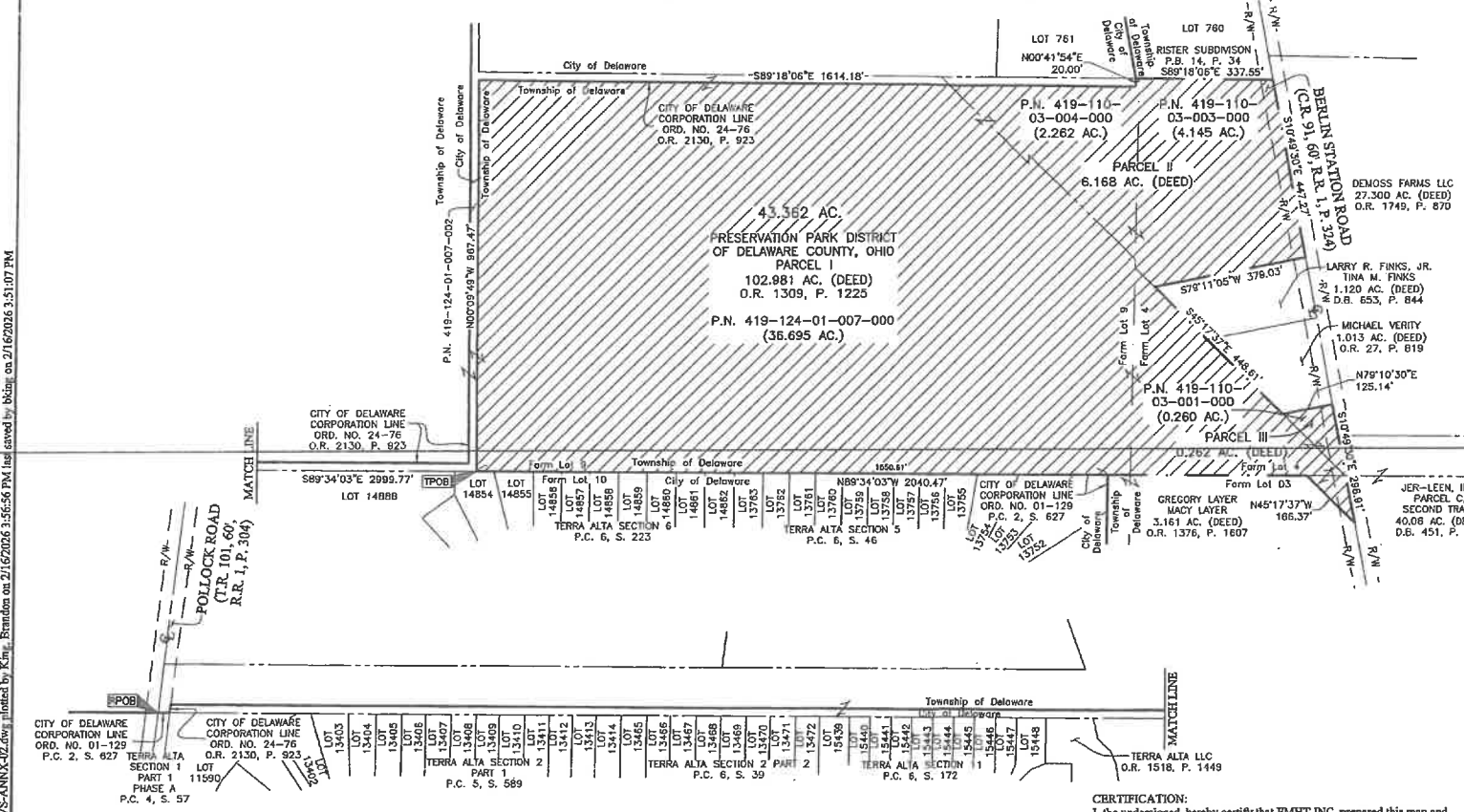


Exh B

MAP OF TERRITORY (43.362 AC. ±) TO BE ANNEXED TO THE CITY OF DELAWARE FROM DELAWARE TOWNSHIP FARM LOTS 4 AND 9, QUARTER TOWNSHIP 1, TOWNSHIP 4, RANGE 19 UNITED STATES MILITARY DISTRICT TOWNSHIP OF DELAWARE, COUNTY OF DELAWARE, STATE OF OHIO



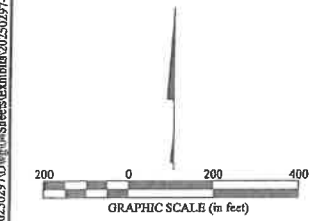
LOCATION MAP AND BACKGROUND DRAWING
NOT TO SCALE



Existing City of Delaware Corporation Line
Proposed City of Delaware Corporation Line
Area of Annexation

NOTES:
This annexation does not create unincorporated islands.
Total perimeter of annexation area is 6845.00 feet, of which 4152.26 feet is contiguous with the City of Delaware by Ordinance Numbers 01-129 and 24-76. The calculated total percentage of perimeter contiguity with the municipality is 61%.
Length of County Road Within Annexed Area - 746.18'
Length of Township Road Within Annexed Area - 0'
The information shown herein is based on record information.
This petition is filed as an expedited II annexation proceeding under Sections 709.021 and 709.023 of the Ohio Revised Code.

130250297D:\GIS\Sheets\Exhibit\20250297-VS-ANNX-02.dwg plotted by K.M. Brandon on 2/16/2026 3:56:56 PM (last saved by bclajr on 2/16/2026 3:51:07 PM)



County Engineer
Delaware County, Ohio

I hereby certify the within to be a true copy of the document that is on file in the Map Department.

CHRIS E. BAUSERMAN, P.E., P.S.
County Engineer

By **Rob Leduc** Date **2-17-26**

Chris Bauserman

CERTIFICATION:
I, the undersigned, hereby certify that EMHT INC. prepared this map and that said map is correct to the best of my knowledge and belief. Dimensions are shown in feet and decimal parts thereof.



By **Brandon R. King** Professional Surveyor No. 8772
bking@emht.com Date **2-16-2026**

EMHT		Date: February 16, 2026
Evans, MacIvor, Hamilton & Sibley, Inc. Engineers • Surveyors • Planners • Scientists 660 New Albany Road, Columbus, OH 43064 Phone: 614.773.4600 Toll Free: 888.778.3448 emht.com		Scale: 1" = 200'
		Job No: 2025-0297
		Sheet: 1 of 1
REVISIONS		
MARK	DATE	DESCRIPTION